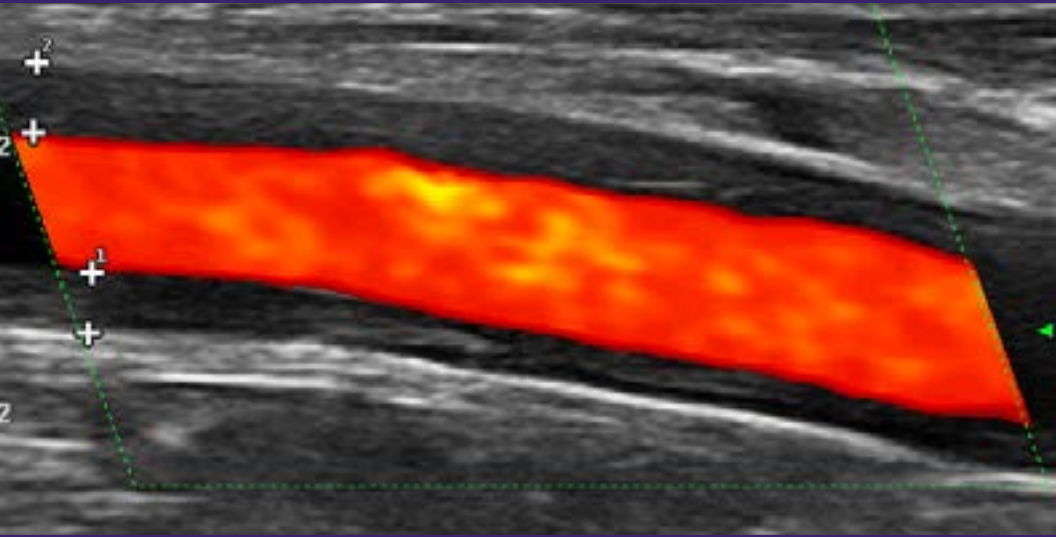


UW Medicine

UW SCHOOL
OF MEDICINE

NORTH AMERICAN WORKSHOP
ON VASCULAR ULTRASOUND
IN LARGE VESSEL VASCULITIS



August 19-21, 2022
Friday-Sunday

Graduate Hotel
Seattle, WA

Sponsored by UW School of Medicine
Division of Rheumatology
Office of Continuing Medical Education

WHO SHOULD ATTEND

This course is directed toward rheumatologists in the United States.

COURSE DESCRIPTION

This course is designed to provide basic training for the rheumatologist in performing vascular ultrasound for the diagnosis of large vessel vasculitis. Hands-on training will be a significant component of this activity, partnered with expert faculty in the field, who will discuss and demonstrate how to identify the basic vascular pathological findings. Intermediate to advanced skill in the performance of ultrasound is strongly recommended as a prerequisite to this course.

COURSE OBJECTIVES

Upon completion of this activity, attendees will be able to:

- Identify normal vascular sonography of the temporal arteries and branches, large supra-aortic, and axillary vessels.
- Review vessel pathology of the temporal arteries and branches, large supra-aortic and axillary vessels, with focus on large vessel vasculitis.
- Properly perform vascular ultrasound scanning techniques and ultrasound settings to optimize image quality.
- Determine indications for vascular ultrasound for the diagnosis of large vessel vasculitis.
- Know how to incorporate vascular ultrasound into your Rheumatology practice.

ACCREDITATION

Accreditation with Commendation

The University of Washington School of Medicine is accredited by the Accreditation Council for Continuing Medical Education to provide continuing medical education for physicians.

Credit Designation

The University of Washington School of Medicine designates this other activity for a maximum of 17.75 AMA PRA Category 1 Credits™. Physicians should claim only the credit commensurate with the extent of their participation in the activity.



FEES AND REGISTRATION

Registration Fee	
All Attendees	\$2,250

The University of Washington Continuing Medical Education Office is a self-sustaining unit and does not depend on or receive public monies in support of its educational efforts. The course fees are estimated to include transcript of AMA PRA Category 1 Credits™, access to online instruction materials, conference management, catering, taxes, faculty planning and salaries.

To enroll, please register online at uwcmc.org. If you have not received confirmation prior to your departure for the course, please contact the CME office at 206.543.1050. Continuing Medical Education will not be responsible for expenses incurred by an individual who is not confirmed if space is not available at the course.

CANCELLATION POLICY

The Office of Continuing Medical Education must receive written notification of your cancellation by **August 5, 2022**. A \$150 processing fee will be deducted from refund requests received by this date. No refunds will be issued following **August 5**. Please note, once the course has reached capacity a wait-list will be available. The Office of Continuing Medical Education reserves the right to cancel this course twenty days prior to the course date when a minimum enrollment is not met or for other reasons that prevent the University from holding the course. Each registrant will be notified by telephone followed by written notification and a full refund. Should the course need to transition to fully virtual or faculty are unable to travel, attendees will be notified. The University of Washington is not responsible for any other costs incurred. Contact the CME Office with questions: call 206.543.1050 or email cme@uw.edu.

ONLINE SYLLABUS

Course material will be available online at uwcme.org (for conference registrants only). Materials will be available beginning **August 12, 2022**, for registrants to print and/or download. A booklet with the conference agenda and pages for note-taking will be provided at the conference. No printed presentation materials will be provided. Pre-recorded content will be available at least two weeks prior.

ATTENDANCE POLICY

Course activities are exclusively reserved for attendees. Badges provided at registration are required for entrance into all functions and will be strictly enforced.

For the optimum learning experience of all, infants and children are not permitted in the education space for the duration of the program. All CME events support parents and nursing mothers by providing access to lactation spaces. Please send an email to cme@uw.edu by **August 5, 2022** if you will need to utilize lactation spaces.

DIETARY REQUESTS

UW CME takes into consideration diverse nutritional preferences and restrictions when planning our complimentary menu. However, those individuals who might find that our menu is not completely aligned to their specific nutritional needs are welcome to bring their own food items.

If you have dietary restrictions, please send an email to cme@uw.edu by **August 5, 2022**.

SPECIAL SERVICES

To request disability accommodation, contact the Disability Services Office at 206-543-6450 (voice), 206-543-6452 (TTY), 206-685-7264 (fax), or dso@uw.edu. The University of Washington makes every effort to honor disability accommodation requests. Requests can be responded to most effectively if received as far in advance of the event as possible, preferably at least 10 days.



HOTEL ACCOMMODATIONS

*A room block will be confirmed for the Graduate Hotel.
Please find information on the CME website to confirm.*

Graduate Hotel
4507 Brooklyn Ave NE
Seattle, WA 98105
206.634.2000
Conference Rate Available

Marriott Residence Inn
4501 12th Avenue NE
Seattle, WA 98105
206.322.8887 or
888.236.2427
Rates depend on availability
Ask for "UW rate"

Watertown Hotel
4242 Roosevelt Way NE
Seattle, WA 98105
206.826.4242 or 888.944.4242
Rates depend on availability
Ask for "UW Conference rate"

Course Faculty

COURSE CO-CHAIRS

P. Scott Pollock, MD, FACP, RMSK
Emeritus Clinical Professor
Division of Rheumatology
Co-Director, UW Fast Track Clinic

Elizabeth Jernberg, MD, RMSK
Clinical Associate Professor
Division of Rheumatology
Co-Director, UW Fast Track Clinic
Virginia Mason Medical Center

PLANNING COMMITTEE

Charles Oshinsky, MD
Fellow
Division of Rheumatology

Ingeborg Sacksen, MD, FACP, RhMSUS
Clinical Associate Professor
Division of Rheumatology
Co-Director, UW Fast Track Clinic

GUEST FACULTY

Wolfgang Schmidt, MD
Professor
Charité University Medicine
Chief Senior Physician
Immanuel Krankenhaus Berlin
Medical Center for Rheumatology Berlin-Buch
Berlin, Germany

Andreas Diamantopoulos, MD, PhD, MPH
Consultant (Rheumatology)
Department of Rheumatology
Martina Hensens Hospital
Bærum, Norway

Lene Terslev, MD, PhD
Professor
Head of Ultrasound Unit
Center for Rheumatology and Spine Diseases
Rigshospitalet Glostrup Copenhagen,
Denmark

Paul DeMarco, MD, FACP, FACP, RhMSUS
Partner
Arthritis and Rheumatism Associates PC
Clinical Associate Professor of Medicine
Georgetown University School of Medicine
Washington, D.C.

Mo Bardi, MD, FRCPC
Clinical Instructor
University of British Columbia
Rheumatologist
Vancouver General Hospital
Vancouver, BC

Mark Matza, MD, MBA
Instructor in Medicine
Harvard Medical School
Co-Clinical Director, Rheumatology
Rheumatologist
Massachusetts General Hospital
Boston, MA

Minna Kohler, MD, RhMSUS
Instructor in Medicine
Harvard Medical School
Director of Rheumatology MSKUS Program
Massachusetts General Hospital
Boston, MA

Karina Torralba, MD
Professor and Head of
Rheumatology & Immunology
Loma Linda University
Rheumatologist
Loma Linda University Medical Center
Loma Linda, CA

Friday, August 19, 2022

12:30 Registration/Sign-In

1:20 Course Welcome & Conference Overview - *P. Scott Pollock, MD*

1:30 Doppler Physics and Applications of Color Doppler Ultrasound -
Lene Terslev, MD, PhD

2:00 How to Optimize the Use of Color Doppler in Vascular Ultrasound -
Lene Terslev, MD, PhD

2:30 How to Correctly Adjust Your Ultrasound Equipment to Perform a
Vascular Ultrasound Exam - *Wolfgang Schmidt, MD*

3:15 Live Demonstration: Adjusting Your Ultrasound Equipment to Perform a
Vascular Ultrasound Exam - *Wolfgang Schmidt, MD*

4:00 Break

4:30 Hands-On Scanning: Adjusting Your Ultrasound Equipment for
Vascular Ultrasound

6:30 Adjourn

Saturday, August 20, 2022

8:00 Sign-in and Continental Breakfast

8:20 Welcome & Daily Overview - *Elizabeth Jernberg, MD*

8:30 Ultrasound of the Temporal Arteries: Techniques, Pitfalls and Pathological
Findings - *Wolfgang Schmidt, MD*

9:00 Live Demonstration: Examining the Temporal Artery - *Wolfgang Schmidt, MD*

9:30 Break

10:00 Hands-On Scanning: Examining the Temporal Artery - *Wolfgang Schmidt, MD*

12:00 Lunch (provided)

1:00 Ultrasound of the Large Arteries - *Andreas Diamantopoulos, MD, PhD, MPH*

1:30 Live Demonstration: Examining the Large Arteries -
Andreas Diamantopoulos, MD, PhD, MPH

2:00 Break

2:30 Hands-On Scanning: Examining the Large Arteries

5:30 Reception

Sunday, August 21, 2022

8:00 Sign-in and Continental Breakfast

8:20 Welcome & Overview - *Ingeborg Sacksen, MD*

8:30 Hands-On Scanning: Temporal, Facial and Larger Artery

10:30 Break

10:45 Incorporating Vascular Ultrasound Into Your Practice: Fast-Track Clinic,
Billing, and Other Practical Matters

*Mo Bardi MD; Minna Kohler, MD; Paul DeMarco, MD, FACP, FACR, RhMSUS;
Karina Torralba, MD; Charlie Oshinsky, MD*

12:15 Adjourn

Pre-Recorded Content

Value of Vascular Ultrasound (US) in Diagnosis & Management of GCA/LVV - Bardi

Doppler Physics and Application of Color Doppler US - Terslev

How to Adjust US Equipment to Perform Vascular US Exams - Schmidt

Fast Track Clinics: Different US Models - Matza