

UW Medicine

UW SCHOOL
OF MEDICINE

18th Update:
**TRAVEL MEDICINE
IN THE ERA OF COVID**



Wednesday

June 30, 2021

Online via Live Webinar

**Sponsored by UW School of Medicine
Department of Family Medicine
Office of Continuing Medical Education**

TARGET AUDIENCE

For non-specialist medical providers, including physicians, nurse practitioners, physician assistants, registered nurses and other allied health professionals.

COURSE DESCRIPTION

This conference will provide an overview of travel medicine and global health and is targeted to non-specialist physicians and other health professionals with an interest in travel medicine and global health.

FEES AND REGISTRATION

COURSE FEES	Through 6/1	After 6/1
MD/DO/PhD	\$250	\$300
Allied Health	\$200	\$250
*Resident/Fellow	\$200	\$200

**Resident/Fellow rate requires written confirmation of current status. Failure to provide required documentation may result in an additional balance owed.*

Continuing Medical Education at the University of Washington is a self-sustaining unit and does not depend on or receive public monies in support of its educational efforts. The course fees are estimated to cover transcript of AMA PRA Category 1 Credits™, access to online instruction materials, course logistics, faculty planning and salaries.

If you have not received confirmation prior to the course start, please contact the CME office at cme@uw.edu. Continuing Medical Education will not be responsible for expenses incurred by an individual who is not confirmed.

IMPORTANT PAYMENT INFORMATION

Per UW CME policy, you are not considered to be registered for the course until full payment has been received.

COURSE OBJECTIVES

Upon completion of this activity, attendees should be able to:

- Effectively prepare patients for travel to low-income countries.
- Review common travel-related issues.
- Recognize common threats to patients returning from international travel.
- Identify resources and additional training related to travel medicine and global health.

ACCREDITATION

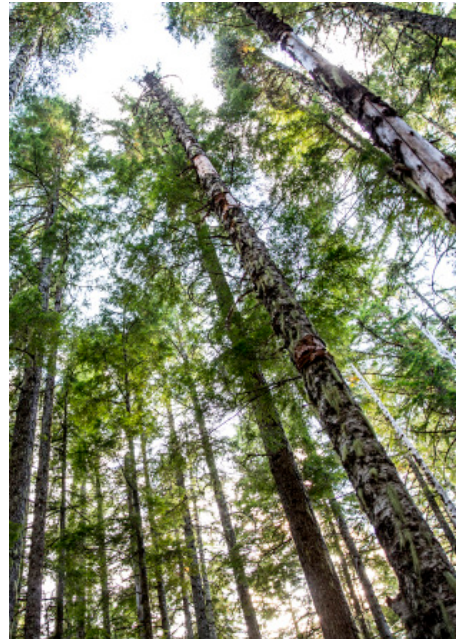
Accreditation with Commendation



The University of Washington School of Medicine is accredited by the Accreditation Council for Continuing Medical Education to provide continuing medical education for physicians.

Credit Designation

The University of Washington School of Medicine designates this live activity for a maximum of 7.5 AMA PRA Category 1 Credits™. Physicians should claim only the credit commensurate with the extent of their participation in the activity.



ONLINE MATERIALS

Instruction materials will be available online at uwcme.org (for conference registrants only). Materials will be available beginning on **June 25, 2021**, for registrants to print and/or download. Content will be recorded and available to attendees for educational purposes. Attendees will be notified when recordings are available, approximately 4-6 weeks after course completion. CME credit is available only for attending the live webinar; no credit is available for watching the recorded lectures.

REFUND AND CANCELLATION POLICY

The Office of Continuing Medical Education must receive written notification of your cancellation by **June 16, 2021**. A \$75.00 processing fee will be deducted from refund requests received by this date. No refunds will be issued following **June 16, 2021**. The Office of Continuing Medical Education reserves the right to cancel this course prior to the course date when a minimum enrollment is not met or for other reasons that prevent the University from holding the course. Each registrant will be notified by written notification and receive a full refund. The University of Washington is not responsible for any other costs incurred. Contact the CME Office with questions via email: cme@uw.edu.

WEBINAR TECHNICAL REQUIREMENTS

Prior to the start, please ensure you have the appropriate system requirements to view the webinar. No refunds will be available for technical issues not controlled by UW CME.

Additional technical requirements can be found on the UWCME website (uwcme.org). Minimum browser requirements for successful access and completion for this activity are as follows:

- Chrome version 70.0 or newer, or Firefox version 63.0 or newer;
- Internet Explorer and Safari **do not work** with the UWCME website (uwcme.org)
- **You may use any browser to view the Zoom webinar.**

SPECIAL SERVICES

The University of Washington reaffirms its policy of equal opportunity regardless of race, color, creed, religion, national origin, sex, sexual orientation, age, marital status, disability, or status as a disabled veteran or Vietnam era veteran in accordance with University policy and applicable federal and state statutes and regulations. The University of Washington is committed to providing access and reasonable accommodation in its services, programs, activities, education and employment for individuals with disabilities. To request disability accommodation please contact the Disability Services Office at least ten (10) days in advance.

Disability Services Office

206.543.6450/Voice • 206.543.6452/TTY • 206.685.7264/Fax • e-mail: dso@uw.edu



Course Faculty

COURSE CHAIR

Christopher Sanford, MD, MPH, DTM&H

Associate Professor, UW Departments of Family Medicine and Global Health
Director, Global Health Fellowship, Department of Family Medicine
Physician, UW Medicine

COURSE CO-CHAIRS

Seth Cohen, MD, MS

Clinical Assistant Professor, UW Division of Allergy & Infectious Diseases
Director, Infection Prevention and Control (UWMC)

Alexa R. Lindley, MD, MPH

Acting Assistant Professor, UW Department of Family Medicine
Family Medicine Residency Program

Paul Pottinger, MD, FACP, FIDSA

Professor, UW Division of Allergy & Infectious Diseases
Director, Infectious Disease Training Program

Anne Terry, ARNP

Manager and Nurse Practitioner, Travel Clinic
UW Hall Health Primary Care Center
Department of Family Medicine

GUEST FACULTY

Martin Cetron, MD

Director, Division of Global Migration and Quarantine
Centers for Disease Control and Prevention
Atlanta, GA

Lin Hwei Chen, MD

Physician, Infectious Disease
Mount Auburn Hospital
Cambridge, MA

Bradley A. Connor, MD

Physician, GI, Tropical Medicine and Emerging Infectious Diseases
New York, NY

Gerard Flaherty, MD, FRCPI, MB BCH, MMedSC, MITH, MMed, FFSEM

Professor of Medical Education
NUI Galway
Galway, Ireland

Sheila Mackell, MD, FAAP

Pediatrician
Mountain View Pediatrics
Flagstaff, AZ

Anne McCarthy, MD

Professor of Medicine, Faculty of Medicine
University of Ottawa
Director, Tropical Medicine and International Health Clinic
Ottawa Hospital
Ottawa, Canada

Course Faculty

UW FACULTY

Jason Beste, MD
Clinical Instructor
Division of Allergy & Infectious Diseases

Helen Y. Chu, MD, MPH
Associate Professor
Division of Allergy & Infectious Diseases
Attending Physician
Harborview Medical Center

Alexander L. Greninger, MD, PhD, MS, MPhil
Assistant Professor
Departments of Laboratory Medicine and Pathology
Assistant Director, Clinical Virology Laboratory
UW Medicine

John B. Lynch, MD, MPH
Associate Professor
Division of Allergy & Infectious Diseases
Medical Director, Infection Prevention & Control
Medical Director, Employee Health
Medical Director, Antimicrobial Stewardship Program
Harborview Medical Center

Elyse Tung, PharmD, BCACP
Clinical Assistant Professor
Director, Clinical Services
Kelley-Ross Pharmacy Polyclinic



Travel Medicine Nuts ‘n Bolts

- 8:20 Introduction; The Pre-Travel Encounter
Christopher Sanford, MD, MPH, DTM&H
- 8:30 Immunizations
Christopher Sanford, MD, MPH, DTM&H
- 9:00 Malaria Prophylaxis and Personal Protection Measures
Anne C. Terry, ARNP
- 9:30 Travelers' Diarrhea: What's New
Bradley A. Connor, MD
- 10:00 Pediatric and Pregnant Travelers
Sheila Mackell, MD, FAAP
- 10:30 Break**
- 10:40 Travelers with Chronic Medical Conditions
Anne McCarthy, MD
- 11:00 Non-Communicable Disease Risks of International Travel
Gerard Flaherty, MD, FRCPI, MB BCH, MMedSc, MITH, MMed, FFSEM
- 11:20 Billing and Travel Medicine
Elyse Tung, PharmD, BCACP
- 11:30 Ethical Considerations of Global Health Work
Alexa Lindley, MD, MPH, and Jason Beste, MD, MPH
- 12:00 So You Want Extra Training in Travel Medicine and Global Health?
Paul Pottinger, MD, FACP, FIDSA
- 12:30 Lunch Break**

Travel and COVID-19

- 1:30 COVID-19: Crisis and Opportunity
Paul Pottinger, MD, FACP, FIDSA
- 2:00 COVID-19: Transmission and Risk Reduction
Seth Cohen, MD
- 2:30 Testing for COVID-19: Screening, Diagnosis, Surveillance
Alexander L. Greninger, MD, PhD, MS, MPhil
- 3:00 Vaccines for COVID-19
Helen Y. Chu, MD, MPH
- 3:30 Break**
- 3:40 COVID-19: Risk of Transmission on Jets and Other Conveyances
John B. Lynch, MD, MPH
- 4:10 Specific Countries' Recommendations and Regulations Regarding COVID-19
Martin Cetron, MD
- 4:40 The Future of Travel Medicine
Lin Hwei Chen, MD
- 5:10 Adjourn**