

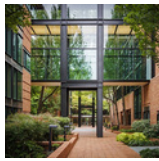
### August 2-4, 2026 [Emergency Radiology 2026](#)

*(In-Person)* This course will provide an update and review on the imaging appearance of trauma and stroke, with a special focus on the key aspects of diagnosis and management, from the perspective of a regional network of care. Content will be presented by world renowned experts from the University of Washington and from trauma centers from across the United States and Canada.



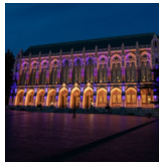
### September 14 -18, 2026 [54th Annual Advances in Family Medicine and Primary Care](#)

*(Hybrid)* The material presented will allow participants to acquire new information as well as review information important to building and maintaining skills valuable for the primary care provider. This course is designed for family physicians, and other primary care providers including internists, pediatricians, osteopathic physicians, physician assistants, nurse practitioners, and others interested in primary care.



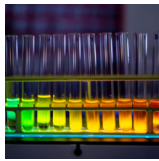
### October 12-16, 2026 [17th Annual Comprehensive Hematology & Oncology Review Course](#)

*(In-Person)* This comprehensive program features 54 topics covering the latest evidence behind guidelines, recommendations, and therapeutic advances for solid tumors and hematologic disorders. Participants will gain a strong understanding of disease pathogenesis, diagnosis, and treatment, while also benefiting from a valuable resource for certifying and re-certifying exam preparation.



### October 30, 2026 [16th John D. Loeser Pain Conference](#)

*(In-Person)* This conference covers a broad range of topics from opioid prescribing updates and buprenorphine integration to non-pharmacologic therapies like acupuncture and physical therapy, with an emphasis on multimodal, biopsychosocial care. Attendees will also gain tools for navigating difficult patient conversations, applying pain psychology principles, and collaborating across interprofessional teams to deliver comprehensive, patient-centered pain management



### December 7-8, 2026 [Current Concepts in Medication Therapy 2026](#)

*(Virtual)* Primary care providers manage an ever-expanding range of medications and increasingly complex regimens in a rapidly evolving landscape. This case-based IPCE course equips clinicians with practical updates on new medications, indications, safety concerns, and interactions through expert-led presentations and interactive panel discussions.



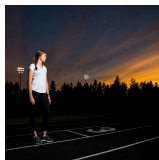
### January 28-29, 2027 [12th Annual Men's Health Update](#)

*(In-Person)* Men's health is a specialized and rapidly evolving field, with ongoing advances in diagnostics, medications, and surgical technologies. This program brings together expert faculty to provide up-to-date guidance on the diagnosis and management of key urologic and men's health conditions, including prostate disease, hormonal disorders, urinary dysfunction, sexual health, infertility, and genital pain, with opportunities for interactive Q&A sessions.



### March 11-12, 2027 [Endocrinology and Diabetes Update for Primary Care 2027](#)

*(In-Person)* This is a comprehensive two-day course on endocrinology and diabetes geared towards primary care providers. There is an immense need for education as the incidence of diabetes and endocrinology disorders in the general population, and primary care clinics carry the major burden of these patients. Didactic lectures offered in this program will provide the latest information on current topics related to diabetes, endocrinology, and guideline updates.



### March 25-26, 2027 [23rd Annual Reproductive & Gynecology Health Updates](#)

*(Hybrid)* This annual conference provides a timely clinical update for providers caring for women+ in outpatient settings. Topics are selected based on attendee feedback, emerging evidence, and areas of controversy, ensuring relevance and practical application. Sessions cover reproductive and gynecologic health, nutrition strategies for cancer prevention, inclusive gender-affirming care, and navigating systemic barriers to access.



### April 23, 2027 [26th Annual Clinical Cardiology Pearls for Primary Care](#)

*(Virtual)* This course for primary care providers delivers practical, up-to-date guidance on common cardiovascular diseases through case-based, interactive lectures led by University of Washington faculty. It reviews current guidelines for conditions such as hypertension, cholesterol management, atrial fibrillation, heart failure, and coronary artery disease, while also addressing topics like anticoagulant use and appropriate cardiovascular imaging.

If you are interested in exhibiting in one of our events, please complete the exhibitor interest form [HERE](#)

For additional information on all of our upcoming UW CE events, please visit us online at [uwcme.org](http://uwcme.org)

Would you like to stay up to date with UW CE events? Subscribe to the [UW IPCE mailing list](#).

Box 359558 | Seattle, WA 98195 | 206.543.1050 | Fax 206.221.4525 | [ipce@uw.edu](mailto:ipce@uw.edu) | [www.uwcme.org](http://www.uwcme.org)

*Dates and course information are subject to change*

# University of Washington

## Regularly Scheduled Continuing Medical Education Programs

### DEPARTMENT OF ANESTHESIOLOGY & PAIN MEDICINE

#### **Anesthesia & Pain Medicine Education Series**

Hybrid | UWMC Montlake Campus and Zoom  
Weekly, Wednesday | 6:30 AM - 7:30 AM  
<https://anesthesiology.uw.edu/education/grand-rounds/>  
Contact Email: [apmgrandrounds@uw.edu](mailto:apmgrandrounds@uw.edu)

#### **HMC Neurocritical Grand Rounds**

Hybrid | Harborview Medical Center and Zoom  
Monthly, 1<sup>st</sup> Tuesday | 1:00 PM - 2:00 PM

#### **UW TelePain Series**

Virtual | Zoom  
Weekly, Wednesday | 12:00 PM - 1:30 PM  
Website: <https://anesthesiology.uw.edu/what-we-do/pain-medicine/telepain/>

#### **HMC Thursday Clinical Education Series**

Virtual | Zoom  
Weekly, Thursday | 6:00 AM - 6:30 AM

### DEPARTMENT OF BIOETHICS & HUMANITIES

#### **Ethics Education Series | Bioethics Grand Rounds**

Virtual | Zoom  
Monthly, Second Wednesday | 12:00 PM – 1:00 PM  
Website:  
<https://depts.washington.edu/bhdept/education-training/bioethics-training>  
Contact: [BHContEd@uw.edu](mailto:BHContEd@uw.edu)

#### **Ethics Education Series | Harborview Ethics Forum**

Virtual | Zoom  
Monthly, 2<sup>nd</sup> Wednesday | 12:00 PM - 1:00 PM Contact:  
[BHContEd@uw.edu](mailto:BHContEd@uw.edu)

### DEPARTMENT OF DERMATOLOGY

#### **UW Dermatology Grand Rounds**

Virtual | Zoom  
Weekly, Wednesday | 8:00 AM - 9:00 AM  
Contact: Aimee Filippi [aimf@uw.edu](mailto:aimf@uw.edu) Website:  
<https://derm.uw.edu/grand-rounds>

#### **Dermatology Journal Club**

Hybrid | Zoom & TBD  
Every 2 Months, 1<sup>st</sup> Monday | 5:30 PM - 8:30 PM  
Website: <https://derm.uw.edu/>

#### **Dermatology Memorial Lecture**

Virtual | Zoom  
Every 3 Months, 2<sup>nd</sup> Friday | 1:00 PM – 4:00 PM  
Website: <https://derm.uw.edu/>

### DEPARTMENT OF FAMILY MEDICINE

#### **Department of Family Medicine Grand Rounds**

Hybrid  
Monthly, 2<sup>nd</sup> Wednesday | 12:00 PM - 1:00 PM  
Website: <https://familymedicine.uw.edu/about/grand-rounds/>

#### **Medication Abortion Access in Primary Care Project ECHO**

Virtual | Zoom  
Monthly, 2<sup>nd</sup> Thursday | 12:00 PM - 1:00 PM Website:  
<https://familymedicine.uw.edu/uw-wont-go-back-initiative/>

### DEPARTMENT OF GASTROENTEROLOGY

#### **Frontiers In Gastroenterology and Hepatology**

Hybrid | Zoom & TBD  
Quarterly, Friday | 7:30 AM - 9:00 AM

### DEPARTMENT OF GLOBAL HEALTH

#### **UW Tele-Antimicrobial Stewardship Prog (TASP ECHO)**

Virtual | Zoom  
Weekly, Tuesday | 9:00 AM - 10:00 AM  
Contact: [uwcsim@uw.edu](mailto:uwcsim@uw.edu)

### DEPARTMENT OF HEMATOLOGY & ONCOLOGY

#### **UW Hematology Grand Rounds**

Hybrid | Fred Hutch and Zoom  
Bi-Weekly, Friday | 8:00 AM - 9:00 AM

#### **Personal and Professional Wellness: Financial Foundations for Hematology and Oncology Fellows**

In-Person | Fred Hutch Cancer Center  
Every 2 Weeks, Tuesday | 8:00 AM - 9:00 AM

### DEPARTMENT OF LABORATORY MEDICINE & PATHOLOGY

#### **Laboratory Medicine Grand Rounds**

Hybrid | UW Health Sciences & Zoom  
Location: D-209 Turner Auditorium  
Sept - June Weekly, Wednesday | 3:30 PM - 4:30 PM  
Website: <https://dlmp.uw.edu/seminars/laboratory-medicine-grand-rounds>

#### **Pathology Grand Rounds**

Hybrid | UWMC Montlake Campus & Zoom  
Oct, Feb, May, Aug; 2<sup>nd</sup> Monday | 12:00 PM - 1:00 PM  
Contact: <https://dlmp.uw.edu/seminars/grand-rounds>

#### **Problems in Forensic Pathology**

In-person | King County Medical Examiner Office Weekly,  
Wednesday | 1:00 PM - 2:00 PM

### DEPARTMENT OF MEDICINE

#### **Cardiology Grand Rounds**

Department of Medicine | Division of Cardiology  
Hybrid | UWMC Montlake Campus & Zoom Weekly,  
Friday | 7:30 AM - 8:30 AM  
<https://cardiology.uw.edu/grand-rounds>

# University of Washington

## Regularly Scheduled Continuing Medical Education Programs

### **Cardiometabolic ECHO**

Department of Medicine, Endocrinology Department of Medicine

Every other Wednesday | 12:30 PM - 1:45 PM Contact: [cmECHO@uw.edu](mailto:cmECHO@uw.edu)

### **Care of Hospitalized Patients with Substance Use Disorders**

Department of Medicine

Friday, October 3, 2025 | 8:00 AM – 1 PM

Contact: Substance Use Research and Education (SURE) Unit

### **Cognition in Primary Care**

Department of General Internal Medicine  
Virtual | Zoom

Contact: [cog-eval@uw.edu](mailto:cog-eval@uw.edu)

### **Department of Medicine Grand Rounds**

Department of Medicine

Virtual | Zoom

1<sup>st</sup> and 3<sup>rd</sup> Fridays | 12:00 PM - 1:00 PM

Website: [cog-eval@uw.edu](mailto:cog-eval@uw.edu)

Join the listserv: <https://mailman.u.washington.edu/mailman/listinfo/medgrdrnds>

Website: <https://medicine.uw.edu/grand-rounds>

### **General Internal Medicine Grand Rounds**

Department of General Internal Medicine Hybrid | Harborview Medical Center & Zoom Bi-Weekly, Friday | 12:00 PM - 1:00 PM Website:

<https://gim.uw.edu/grand-rounds>

### **Hospitalist Journal Club**

Dept of Medicine, Hospital Medicine

In-Person | VA Puget Sound, Seattle

Monthly, Last Thursday | 4:00 PM – 5:00 PM

### **Substance Use Research and Education (SURE)**

#### **Unit: Works in Progress**

Department of Medicine

1<sup>st</sup> Thursday, Monthly | 12:00 PM – 1 PM

Contact: Substance Use Research and Education (SURE) Unit

### **Transplant Grand Rounds**

Department of Nephrology

Hybrid | UWMC Montlake Campus & Zoom Weekly, Friday | 12:00 PM - 1:00 PM

Website: <https://nephrology.uw.edu/grand-rounds>

### **UW Medicine Primary Care Lightning Rounds**

Department of General Internal Medicine

Virtual | [Zoom](#)

Monthly, 3<sup>rd</sup> Wednesday | 7:30 AM - 8:00 AM Website:

<https://one.uwmedicine.org/sites/UWNC/provinfoctr/Pages/Lightning-Rounds.aspx>

### **UW Medicine Primary Care M&M Conference**

Department of General Internal Medicine

Monthly, 1<sup>st</sup> Wednesday | 7:30 AM - 8:00 AM

Contact: Jada Stewart [jms77@uw.edu](mailto:jms77@uw.edu)

NOTE: Only open to UW Medicine Faculty/Staff

### **Viral Hepatitis Project ECHO**

Dept of Medicine, Div of Allergy and Immunology

Virtual | Zoom

Weekly, Tuesday | 12:00 PM - 1:15 PM Contact: Pam

Landinez [landinez@uw.edu](mailto:landinez@uw.edu)

### **DEPARTMENT OF PULMONARY, CRITICAL CARE, AND SLEEP MEDICINE**

#### **Pulmonary, Critical Care, and Sleep Medicine Grand Rounds**

Department of Pulmonary, Critical Care, and Sleep Medicine

Hybrid | Harborview Medical Center & Zoom

Monthly, 1<sup>st</sup> Thursday | 1:30 PM - 2:20 PM

Contact Eric Morrell, MD [edmorrell@uw.edu](mailto:edmorrell@uw.edu) and Leila Armas

[larmas@uw.edu](mailto:larmas@uw.edu)

#### **QI Improved Scholars**

Hybrid | Children's Hospital & Zoom Monthly, 2<sup>nd</sup> Tuesday | 9:00 AM - 1:00 PM

Website: <https://patientsafety.uw.edu/programs/qi-scholars->

#### **Seattle Area Chest Grand Rounds**

Dept of Pulmonology, Critical Care, and Sleep Medicine

Hybrid | Ninth & James Bldg NJB-707 & Zoom

Weekly, Thursday | 12:20 PM - 1:30 PM

[Zoom Link](#)

Contact: Leila Armas [larmas@uw.edu](mailto:larmas@uw.edu)

#### **UW Sleep Conference (Grand Rounds)**

Dept of Pulmonology, Critical Care, and Sleep Medicine  
Virtual | Zoom

Weekly, Tuesday | 12:00 PM - 1:00 PM [Grand Rounds |](#)

[UW Dept of Neurology](#) Contact: Leila Armas

[larmas@uw.edu](mailto:larmas@uw.edu)

#### **VA Sleep Medicine Conference**

VA and UW Sleep Medicine

Hybrid | Zoom & TBD

Weekly, Wednesday | 2:00 PM – 3:00 PM

#### **VA Pulmonary Post-Clinic Conference**

VA and UW Sleep Medicine

Hybrid | Zoom & TBD

Weekly, Tuesday | 4:45 PM – 5:45 PM

### **DEPARTMENT OF NEUROLOGICAL SURGERY**

#### **Neurological Surgery Education Series**

Hybrid | Varied Locations and Zoom Weekly,

Wednesdays | 7:00 AM - 8:00 AM

<https://neurosurgery.uw.edu/education/conference-and-rounds/grand-rounds-schedule>

Contact: Julie Bould [jbould@uw.edu](mailto:jbould@uw.edu)

### **DEPARTMENT OF NEUROLOGY**

#### **Headache Expertise Series**

Virtual | Zoom

Weekly, Thursday | 12:00 PM - 1:00 PM

[UW Headache Expertise Series Website](#)

#### **Project ECHO Dementia**

Virtual | Zoom

Bimonthly, 2<sup>nd</sup> & 4<sup>th</sup> Fridays | 12:15 PM - 1:30 PM

Contact: Samantha Lafontaine [slafon@uw.edu](mailto:slafon@uw.edu)

#### **Neurology Grand Rounds**

Virtual | Zoom

Weekly, Thursday | 4:30 PM - 5:30 PM

Contact Email [neuro650@uw.edu](mailto:neuro650@uw.edu)

# University of Washington

## Regularly Scheduled Continuing Medical Education Programs

### **Neurology Lecture Series**

Virtual | Zoom

Weekly, Wednesday | 12:00 PM - 1:00 PM

Contact Email: [neuro650@uw.edu](mailto:neuro650@uw.edu)

### **NeuroOncology Tumor Board**

Virtual | Zoom

Weekly, Wednesday | 9:30 AM - 11:00 AM

Contact Michael Pearson [mmpears@uw.edu](mailto:mmpears@uw.edu)

### **NeuroNICU Table Rounds**

Hybrid | Zoom & TBD

Weekly, Friday | 1:30 PM - 2:30 PM

### **DEPARTMENT OF NEURORADIOLOGY**

#### **HMC Transcranial Doppler Laboratory Rounds**

In-Person | Harborview Medical Center Quarterly,

Friday | 4:00 PM - 5:00 PM

### **DEPARTMENT OF PEDIATRICS**

#### **Neonatal Division Tuesday Conference Series**

In-Person | School of Medicine

Weekly, Tuesday | 2:30 PM - 4:00 PM

#### **Applied Improvement Science Program**

In-Person | Seattle Children's Hospital

Monthly, 1<sup>st</sup> Tuesday | 8:00 AM - 12:00 PM

### **DEPARTMENT OF OBSTETRICS & GYNECOLOGY**

#### **Perinatal Case Conference Series | Los Angeles Maternal Mental Health Access(LAMMHA) ECHO**

Contact: <https://ccalac.org/about/spotlight-on-innovation/echo-perinatal-case-conferences-provide-support-with-maternal-mental-health/>

#### **OBGYN Grand Rounds**

Hybrid | South Campus Center and Zoom

Wednesdays, 2-3 times per month | 8:00 AM - 9:00 AM

Contact: [obgyngrandrounds@uw.edu](mailto:obgyngrandrounds@uw.edu)

Website: <https://obgyn.uw.edu/news/grand-rounds>

#### **Prenatal Diagnosis, Ultrasound and Perinatal**

#### **Pathology Conference**

Virtual | Zoom

Monthly | Last Friday | 11:00 AM - 12:00 PM

Website: <https://obgyn.uw.edu/>

### **Seattle Children's Hospital Department of Laboratories**

#### **Seattle Children's Hospital Department of Laboratory Medicine & Pathology Grand Rounds**

In-Person | Seattle Children's Hospital

Monthly, 1<sup>st</sup> Wednesday | 12:00 PM - 1:00 PM

### **DEPARTMENT OF OPHTHALMOLOGY**

#### **Ophthalmology Grand Rounds**

Hybrid | Harborview Ninth & Jefferson Building and Zoom

Weekly, Thursday | 8:00 AM - 9:00 AM

Contact: Pam Baker [pbaker82@uw.edu](mailto:pbaker82@uw.edu)

### **DEPARTMENT OF ORTHOPAEDICS & SPORTS**

#### **MEDICINE**

#### **Orthopaedic Grand Rounds**

Virtual | Zoom

Monthly, 1<sup>st</sup> Wednesday | 6:45 AM - 7:45 AM Contact:

Plinette Sanchez [plinsan@uw.edu](mailto:plinsan@uw.edu)

### **DEPARTMENT OF PHYSICAL MEDICINE & REHABILITATION**

#### **Rehabilitation Grand Rounds**

Virtual | Zoom

Monthly, 2<sup>nd</sup> Tuesday | 7:30 AM - 8:30 AM

Contact: [RehabChair@uw.edu](mailto:RehabChair@uw.edu)

### **DEPARTMENT OF PSYCHIATRY & BEHAVIORAL SCIENCES**

#### **AMPERE ECHO: Suicide Prevention**

Virtual | Zoom

Monthly, 4<sup>th</sup> Tuesday | 12:00 PM - 1:00 PM

Registration: [AMPERE Registration Link](#)

#### **GA ECHO: Opioid Use Disorder in Ambulatory Care**

Virtual | Zoom

Varied Schedule

Contact: [Rebecca.Boraz@kp.org](mailto:Rebecca.Boraz@kp.org)

#### **Hot Topics in Mental Health and Law: Civil Commitment**

Virtual | Zoom

Monthly, 2<sup>nd</sup> Tuesday | 12:00 PM - 1:00 PM

Website:

<https://cmhpl.psychiatry.uw.edu/education/events/civil-commitment/>

Contact: [cmhpl@uw.edu](mailto:cmhpl@uw.edu)

#### **Integrated Care Psychiatric Consultant Learning Collaborative**

Virtual | Zoom

Monthly, 2<sup>nd</sup> Tuesday | 12:00 PM - 1:00 PM

Website: <https://ictp.uw.edu/programs/integrated-care-psychiatric-consultant-learning-collaborative>

#### **MAP ECHO: Perinatal Psychiatry Case Conference Series**

Virtual | Zoom

Monthly, 1<sup>st</sup> Wednesday | 12:00 PM - 1:00 PM

Website: <https://perc.psychiatry.uw.edu/map-echo-perinatal-psychiatry-case-conference-series/>

Contact: Joanne Quiray [mcmh@uw.edu](mailto:mcmh@uw.edu)

# University of Washington

## Regularly Scheduled Continuing Medical Education Programs

### **TeleBehavioral Health Training 101, 201, 301, 401**

Harborview Medical Center Behavioral Health Institute  
Online | LMS Modules  
On Demand | Self-Paced

[TeleBehavioral Health - Harborview Behavioral Health Institute \(uw.edu\)](#);

Contact: [bhinstitute@uw.edu](mailto:bhinstitute@uw.edu)

### **TeleBehavioral Health Training 501**

Harborview Medical Center Behavioral Health Institute  
Virtual | Zoom

Monthly, 3<sup>rd</sup> Friday | 11:00 AM - 12:00 PM

[TeleBehavioral Health - Harborview Behavioral Health Institute \(uw.edu\)](#);

Contact: [bhinstitute@uw.edu](mailto:bhinstitute@uw.edu)

### **UW Psychiatry and Addictions Case Conference**

Virtual | Zoom

Weekly, Thursday | 12:00 PM - 1:30 PM

[UW PACC | Integrated Care Training Program](#) Contact  
[uwpaccc@uw.edu](mailto:uwpaccc@uw.edu)

### **UW Traumatic Brain Injury - Behavioral Health ECHO**

Webinar | Zoom

Bimonthly, 1<sup>st</sup> and 3<sup>rd</sup> Friday | 12:00 PM - 1:30 PM

[TBI BH ECHO – Connecting Frontline Providers with Experts \(uw.edu\)](#)

Contact: [tbi-bh@uw.edu](mailto:tbi-bh@uw.edu)

## **DEPARTMENT OF RADIOLOGY**

### **Nuclear Medicine Clinical Case Conference**

Hybrid | Zoom & TBD

Weekly, Thursday | 7:30 AM - 9:00 AM

Contact: [lastp@uw.edu](mailto:lastp@uw.edu)

**Radiology Peer Learning Conference** Hybrid |  
Harborview Medical Center and Zoom Monthly, 4<sup>th</sup>  
Thursday | 12:00 PM - 1:00 PM

## **DEPARTMENT OF OPHTHALMOLOGY**

### **Ophthalmology Grand Rounds**

Hybrid | Zoom & Harborview Medical Center

Weekly, Thursday | 8:00 AM - 9:00 AM

Website: <https://ophthalmology.washington.edu/grand-rounds-lecture-series/>

## **DEPARTMENT OF SURGERY**

### **Healthcare Simulation Science (HCSS) Grand Rounds**

Hybrid | Harborview Medical Center & Zoom Monthly,  
2<sup>nd</sup> Tuesday | 5:00 PM – 6:00 PM

### **Plastic Surgery Division Educational Conference**

Hybrid | Harborview Medical Center & Zoom Weekly,  
Wednesday | 6:30 AM - 7:30 AM

### **Surgery Grand Rounds**

Hybrid | UWMC Montlake Campus K069 & Zoom

Monthly, 1<sup>st</sup> Wednesday | 6:30 AM - 7:30 AM Contact:  
[dosadmin@uw.edu](mailto:dosadmin@uw.edu)

## **FRED HUTCH CANCER CENTER**

### **Head & Neck Cancer Webinar Series**

Virtual | Zoom

September, November, February, April Contact  
[outreach@fredhutch.org](mailto:outreach@fredhutch.org)

### **Immune-Related Adverse Events (irAE) Webinar**

Virtual | Zoom

September, December, March, June Contact  
[outreach@fredhutch.org](mailto:outreach@fredhutch.org)

## **MOUNTAIN WEST AETC**

### **MWAETC ECHO**

Virtual | Zoom

Weekly, Thursday | 12:00 PM – 1:15 PM

Website: <https://mwaetc.org/>

## **NURSING PROFESSIONAL DEVELOPMENT**

### **Nurse Talks**

In-Person | UW Tower

9/9/2026, 1/13/2026, 5/12/2026 | 12:00 PM – 4:00 PM

## **OFFICE OF FACULTY AFFAIRS**

### **CLIME Advanced Clinical Teaching Program**

Center for Leadership and Innovation in Medical  
Education

Virtual | Zoom

Monthly | 1:00 PM - 3:00 PM

Website: <https://clime.washington.edu/> Contact:  
[clime@uw.edu](mailto:clime@uw.edu)

### **CLIME Clinical Teaching Program**

Center for Leadership and Innovation in Medical  
Education

Virtual | Zoom

Monthly | 9:00 AM - 11:00 AM Website:

<https://clime.washington.edu/> Contact: [clime@uw.edu](mailto:clime@uw.edu)

### **CLIME Educator Development Series**

Center for Leadership and Innovation in Medical  
Education

Hybrid | UW Magnuson Health Sciences Building &  
Zoom

Monthly, 1<sup>st</sup> Thurs | 12:00 PM - 1:00 PM

Website: <https://clime.washington.edu/> Contact:  
[clime@uw.edu](mailto:clime@uw.edu)

### **CLIME Grand Rounds**

Center for Leadership and Innovation in Medical  
Education

Virtual: Zoom

Quarterly, 1<sup>st</sup> Wed 12:00 PM - 1:00 PM

### **CLIME Teaching Scholars Program**

Center for Leadership and Innovation in Medical  
Education

Virtual | Zoom

Weekly, Tuesdays | 9:00 AM - 12:00 PM

Website: <https://clime.washington.edu/> Contact:  
[clime@uw.edu](mailto:clime@uw.edu)

# University of Washington

## Regularly Scheduled Continuing Medical Education Programs

### **Electronic Health Record (EHR) Inbox Management**

Office of Faculty Affairs  
In-person | Varied Locations  
Varied | 9:00 AM - 11:30 AM

### **Healthcare Finance Series**

Office of Faculty Affairs  
Virtual 2 sessions, In-person, 1 session | Zoom & TBA  
Varied | 9:00 AM - 11:00 AM  
More information: <https://faculty.uwmedicine.org/healthcare-finance/>

### **Leadership Development Series**

Office of Faculty Affairs  
Virtual | Zoom  
Varied | 9:00 AM - 11:00 AM  
More information: <https://faculty.uwmedicine.org/leadership/>

### **Mindful Self-Compassion Series**

Office of Faculty Affairs  
Virtual | Zoom  
Weekly, Thursday | 12:00 PM - 1:00 PM  
September 5, 2024 - October 10, 2024  
More information:  
<https://faculty.uwmedicine.org/resilience-programming/>

### **Rising Leaders**

Office of Faculty Affairs  
In-person | UWMC Montlake Campus  
Varied | 12:00 PM - 5:00 PM  
Website: <https://faculty.uwmedicine.org/rising-leaders/>

## **OFFICE OF HEALTHCARE EQUITY**

### **Office of Healthcare Equity EDI Foundational Training**

Virtual | Zoom  
Varied - 5 Sessions | 10:00 AM - 12:00 PM  
Website: <https://equity.uwmedicine.org/employee-resources/foundational-training/>