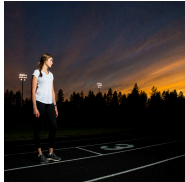




**March 16-17, 2025 Endocrinology and Diabetes Updates for Primary Care**

*(In-Person)* Stay at the forefront of endocrinology and diabetes management with this comprehensive course. Master thyroid problem management, treat osteoporosis and gonadal disorders confidently, and explore new diabetes treatments and glucose monitoring technology. Enhance your expertise and deliver exceptional patient care.



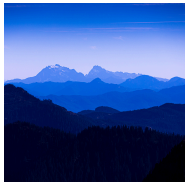
**March 26-27, 2025 21st Annual Reproductive & Gynecology Health Updates**

*(Hybrid)* This annual conference updates healthcare providers on relevant health topics for women +, chosen based on attendee suggestions, significant changes, and controversial subjects. It aims to provide a clinical update for outpatient care providers through short lectures and Q&A sessions. Enhance your knowledge and stay current with the latest advancements in healthcare for women +.



**May 2, 2025 24th Annual Clinical Cardiology Pearls for Primary Care**

*(Virtual)* This course provides primary care providers with practical, up-to-date information on cardiovascular diseases, taught by world-class faculty from the University of Washington School of Medicine. It covers recent guidelines for hypertension, cholesterol management, heart disease prevention, atrial fibrillation, and heart failure, along with practical issues like new anticoagulants and cardiovascular imaging. The day concludes with q&a session led by the course chairs.



**June 26-27, 2025 20th Update: Travel Medicine and Global Health**

*(In-Person)* This two-day hybrid conference offers an overview of travel medicine and global health for non-specialist physicians and health professionals. It prepares clinicians to identify, diagnose, and treat superbugs and antimicrobial resistance, with insights from experts in travel medicine, global health, and infectious diseases. Participants will gain the knowledge and skills needed to address travelers' health needs and improve global health outcomes.



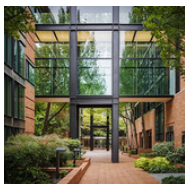
**August 3-5, 2025 Emergency Radiology 2025**

*(In-Person)* This course updates the imaging appearance of trauma and stroke, focusing on diagnosis and management within a regional care network. It covers higher care indications, radiology for evacuation and transport, Quality Improvement, and lessons from the American College of Surgeons Committee. Experts from the University of Washington and trauma centers across the U.S. and Canada will present diverse perspectives, including surgery, emergency medicine, neurology, and disaster response.



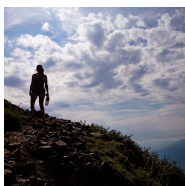
**September 8-12, 2025 53rd Annual Advances in Family Medicine and Primary Care**

*(Hybrid)* For the 53rd year, the University of Washington's Department of Family Medicine offers a course covering various disciplines, including cardiology, endocrinology, and dermatology. Participants will acquire new information, review essential skills, and engage in hands-on learning. Designed for family physicians and other primary care providers, the course includes evidence-based guidelines from recent studies and professional organizations.



**October 6-10, 2025 16th Annual Comprehensive Hematology & Oncology Review Course**

*(In-Person)* This program covers 54 topics on the latest data supporting guidelines and advancements in treating solid tumors and hematologic disorders. Participants will gain an in-depth understanding of pathogenesis, diagnostic evaluation, and therapeutic modalities. It also serves as an excellent resource for preparing for certifying and re-certifying exams.



**October 16-17, 2025 Updates in Hospital Medicine**

*(Virtual)* This program covers 54 topics on the latest data supporting guidelines and advancements in treating solid tumors and hematologic disorders. Participants will gain an in-depth understanding of pathogenesis, diagnostic evaluation, and therapeutic modalities. It also serves as an excellent resource for preparing for certifying and re-certifying exams.

For additional information on all of our upcoming UW CME events, please visit us online at [uwcme.org](http://uwcme.org)

Would you like to stay up to date with UW CME events? Subscribe to the [UW CME mailing list](#).

Box 359558 | Seattle, WA 98195 | 206.543.1050 | Fax 206.221.4525 | [cme@uw.edu](mailto:cme@uw.edu) | [www.uwcme.org](http://www.uwcme.org)

*Dates and course information are subject to change*

# University of Washington

## Regularly Scheduled Continuing Medical Education Programs

### DEPARTMENT OF ANESTHESIOLOGY & PAIN MEDICINE

#### **Anesthesia & Pain Medicine Education Series**

Hybrid | UWMC Montlake Campus and Zoom  
Weekly, Wednesday | 6:30 AM - 7:30 AM  
Website: <https://anesthesiology.uw.edu/education/grand-rounds/>  
Contact: Julian Perez [julian00@uw.edu](mailto:julian00@uw.edu)

#### **HMC Neurocritical Grand Rounds**

Hybrid | Harborview Medical Center and Zoom  
Monthly, 1<sup>st</sup> Tuesday | 1:00 PM - 2:00 PM

#### **UW TelePain Series**

Virtual | Zoom  
Weekly, Wednesday | 12:00 PM - 1:30 PM  
Website: <https://anesthesiology.uw.edu/what-we-do/pain-medicine/telepain/>

### DEPARTMENT OF BIOETHICS & HUMANITIES

#### **Ethics Education Series | Bioethics Grand Rounds**

Virtual | Zoom  
Website: <https://depts.washington.edu/bhdept/education-training/bioethics-training>  
Contact: [BHContEd@uw.edu](mailto:BHContEd@uw.edu)

#### **Ethics Education Series | Harborview Ethics Forum**

Virtual | Zoom  
Monthly, 2<sup>nd</sup> Wednesday | 12:00 PM - 1:00 PM  
Contact: [BHContEd@uw.edu](mailto:BHContEd@uw.edu)

### DEPARTMENT OF DERMATOLOGY

#### **UW Dermatology Grand Rounds**

Virtual | Zoom  
Weekly, Wednesday | 8:00 AM - 9:00 AM  
Contact: Aimee Filippi [aimf@uw.edu](mailto:aimf@uw.edu)  
Website: <https://derm.uw.edu/grand-rounds>

### DEPARTMENT OF FAMILY MEDICINE

#### **Department of Family Medicine Grand Rounds**

Hybrid  
Monthly, 2<sup>nd</sup> Wednesday | 12:00 PM - 1:00 PM  
Website: <https://familymedicine.uw.edu/about/grand-rounds/>

### DEPARTMENT OF GLOBAL HEALTH

#### **UW Tele-Antimicrobial Stewardship Prog (TASP ECHO)**

Virtual | Zoom  
Weekly, Tuesday | 9:00 AM - 10:00 AM  
Contact: [uwcsim@uw.edu](mailto:uwcsim@uw.edu)

### DEPARTMENT OF LABORATORY MEDICINE & PATHOLOGY

#### **Laboratory Medicine Grand Rounds**

Hybrid | UW Health Sciences & Zoom  
Location: D-209 Turner Auditorium, Sept - June  
Weekly, Wednesday | 3:30 PM - 4:30 PM  
Website: <https://dlmp.uw.edu/seminars/laboratory-medicine-grand-rounds>

#### **Pathology Grand Rounds**

Hybrid | UWMC Montlake Campus & Zoom  
Oct, Feb, May, Aug; 2<sup>nd</sup> Monday | 12:00 PM - 1:00 PM  
Contact: <https://dlmp.uw.edu/seminars/grand-rounds>

#### **Problems in Forensic Pathology**

In-person | King County Medical Examiner Office  
Weekly, Wednesday | 1:00 PM - 2:00 PM

### DEPARTMENT OF MEDICINE

#### **Cardiology Grand Rounds**

Department of Medicine | Division of Cardiology  
Hybrid | UWMC Montlake Campus & Zoom  
Weekly, Friday | 7:30 AM - 8:30 AM  
<https://cardiology.uw.edu/grand-rounds>

#### **Cardiometabolic ECHO**

Department of Medicine, Endocrinology  
Every other Wednesday | 12:30 PM - 1:45 PM  
Contact: [cmECHO@uw.edu](mailto:cmECHO@uw.edu)

#### **Cognition in Primary Care**

Department of General Internal Medicine  
Virtual | Zoom  
Contact: [cog-eval@uw.edu](mailto:cog-eval@uw.edu)

#### **Department of Medicine Grand Rounds**

Department of Medicine  
Virtual | Zoom  
1<sup>st</sup> and 3<sup>rd</sup> Fridays | 12:00 PM - 1:00 PM  
Website: [cog-eval@uw.edu](mailto:cog-eval@uw.edu)  
Join the listserv: <https://mailman.u.washington.edu/mailman/listinfo/medgrdrnds>  
Website: <https://medicine.uw.edu/grand-rounds>

#### **General Internal Medicine Grand Rounds**

Department of General Internal Medicine  
Hybrid | Harborview Medical Center & Zoom  
Bi-Weekly, Friday | 12:00 PM - 1:00 PM  
Website: <https://gim.uw.edu/grand-rounds>

#### **Pulmonary, Critical Care, and Sleep Medicine Grand Rounds**

Department of Pulmonary, Critical Care, and Sleep Medicine  
Hybrid | Harborview Medical Center & Zoom  
Monthly, 1<sup>st</sup> Thursday | 1:30 PM - 2:20 PM  
Contact Eric Morrell, MD [edmorrell@uw.edu](mailto:edmorrell@uw.edu) and Leila Armas [larmas@uw.edu](mailto:larmas@uw.edu)

#### **QI Improved Scholars**

Hybrid | Children's Hospital & Zoom  
Monthly, 2<sup>nd</sup> Tuesday | 9:00 AM - 1:00 PM  
Website: <https://patientsafety.uw.edu/programs/qi-scholars->

#### **Seattle Area Chest Grand Rounds**

Dept of Pulmonology, Critical Care, and Sleep Medicine  
Hybrid | Ninth & James Bldg NJB-707 & Zoom  
Weekly, Thursday | 12:20 PM - 1:30 PM  
[Zoom Link](#)  
Contact: Leila Armas [larmas@uw.edu](mailto:larmas@uw.edu)

#### **Transplant Grand Rounds**

Department of Nephrology  
Hybrid | UWMC Montlake Campus & Zoom  
Weekly, Friday | 12:00 PM - 1:00 PM  
Website: <https://nephrology.uw.edu/grand-rounds>

# University of Washington

## Regularly Scheduled Continuing Medical Education Programs

### **UW Allergy and Immunology Teaching Series**

Hybrid | South Lake Union  
Weekly, Tuesday | 7:00 AM - 8:00 AM Website:  
[UW AI Teaching Series](#)

### **UW Hematology Grand Rounds**

Hybrid | Fred Hutch and Zoom  
Bi-Weekly, Friday | 8:00 AM - 9:00 AM

### **UW Medicine Primary Care Lightning Rounds**

Department of General Internal Medicine  
Virtual | [Zoom](#)  
Monthly, 3<sup>rd</sup> Wednesday | 7:30 AM - 8:00 AM Website:  
<https://one.uwmedicine.org/sites/UWNC/provinfoctr/Pages/Lightning-Rounds.aspx>

### **UW Medicine Primary Care M&M Conference**

Department of General Internal Medicine  
Monthly, 1<sup>st</sup> Wednesday | 7:30 AM - 8:00 AM Contact:  
Jada Stewart [jms77@uw.edu](mailto:jms77@uw.edu)  
NOTE: Only open to UW Medicine Faculty/Staff

### **UW Sleep Conference (Grand Rounds)**

Dept of Pulmonology, Critical Care, and Sleep Medicine  
Virtual | [Zoom](#)  
Weekly, Tuesday | 12:00 PM - 1:00 PM [Grand Rounds](#) | [UW Dept of Neurology](#) Contact: Leila Armas [larmas@uw.edu](mailto:larmas@uw.edu)

### **UWMC Northwest Hospital Journal Club**

Department of GIM | Northwest Inpatient Services  
Hybrid | UWMC Northwest Campus or Zoom  
Bimonthly, 1<sup>st</sup> and 2<sup>nd</sup> Friday | 12:00 PM - 1:00 PM  
Contact: Bryne Rowe [barowe@uw.edu](mailto:barowe@uw.edu)

## **DEPARTMENT OF NEUROLOGICAL SURGERY**

### **Neurological Surgery Education Series**

Hybrid | Varied Locations and Zoom Weekly,  
Wednesdays | 7:00 AM - 8:00 AM  
<https://neurosurgery.uw.edu/education/conference-and-rounds/grand-rounds-schedule>  
Contact: Julie Bould [jbould@uw.edu](mailto:jbould@uw.edu)

## **DEPARTMENT OF NEUROLOGY**

### **Headache Expertise Series**

Virtual | [Zoom](#)  
Weekly, Thursday | 12:00 PM - 1:00 PM [UW Headache Expertise Series Website](#)

### **Project ECHO Dementia**

Virtual | [Zoom](#)  
Bimonthly, 2<sup>nd</sup> & 4<sup>th</sup> Fridays | 12:15 PM - 1:30 PM  
Contact: Samantha Lafontaine [slafon@uw.edu](mailto:slafon@uw.edu)

### **Neurology Grand Rounds**

Virtual | [Zoom](#)  
Weekly, Thursday | 4:30 PM - 5:30 PM Contact  
Mary-Mae Baker [neuro650@uw.edu](mailto:neuro650@uw.edu)

### **Neurology Lecture Series**

Virtual | [Zoom](#)  
Weekly, Wednesday | 12:00 PM - 1:00 PM  
Contact Mary-Mae Baker [neuro650@uw.edu](mailto:neuro650@uw.edu)

### **NeuroOncology Tumor Board**

Virtual | [Zoom](#)  
Weekly, Wednesday | 9:30 AM - 11:00 AM  
Contact Michael Pearson [mmpears@uw.edu](mailto:mmpears@uw.edu)

## **DEPARTMENT OF NEURORADIOLOGY**

### **HMC Transcranial Doppler Laboratory Rounds**

In-Person | Harborview Medical Center  
Quarterly, Friday | 4:00 PM - 5:00 PM

## **DEPARTMENT OF OBSTETRICS & GYNECOLOGY**

### **Perinatal Case Conference Series | Los Angeles Maternal Mental Health Access(LAMMHA) ECHO**

Contact: <https://ccalac.org/about/spotlight-on-innovation/echo-perinatal-case-conferences-provide-support-with-maternal-mental-health/>

### **OBGYN Grand Rounds**

Hybrid | South Campus Center and Zoom  
Wednesdays, 2-3 times per month | 8:00 AM - 9:00 AM  
Contact: [obgynggrandrounds@uw.edu](mailto:obgynggrandrounds@uw.edu)  
Website: <https://obgyn.uw.edu/news/grand-rounds>

## **DEPARTMENT OF OPHTHALMOLOGY**

### **Ophthalmology Grand Rounds**

Hybrid | Harborview Ninth & Jefferson Building and Zoom  
Weekly, Thursday | 8:00 AM - 9:00 AM  
Contact: Pam Baker [pbaker82@uw.edu](mailto:pbaker82@uw.edu)

## **DEPARTMENT OF ORTHOPAEDICS & SPORTS MEDICINE**

### **Orthopaedic Grand Rounds**

Virtual | [Zoom](#)  
Monthly, 1<sup>st</sup> Wednesday | 6:45 AM - 7:45 AM  
Contact: Plinette Sanchez [plinsan@uw.edu](mailto:plinsan@uw.edu)

## **DEPARTMENT OF PHYSICAL MEDICINE & REHABILITATION**

### **Rehabilitation Grand Rounds**

Virtual | [Zoom](#)  
Monthly, 2<sup>nd</sup> Tuesday | 7:30 AM - 8:30 AM  
Contact: [RehabChair@uw.edu](mailto:RehabChair@uw.edu)

## **DEPARTMENT OF PSYCHIATRY & BEHAVIORAL SCIENCES**

### **GA ECHO: Opioid Use Disorder in Ambulatory Care**

Virtual | [Zoom](#)  
Varied Schedule  
Contact: [Rebecca.Boraz@kp.org](mailto:Rebecca.Boraz@kp.org)

### **AMPERE ECHO: Suicide Prevention**

Virtual | [Zoom](#)  
Monthly, 4<sup>th</sup> Tuesday | 12:00 PM - 1:00 PM  
Registration: [AMPERE Registration Link](#)

### **Hot Topics in Mental Health and Law: Civil Commitment**

Virtual | [Zoom](#)  
Monthly, 2<sup>nd</sup> Tuesday | 12:00 PM - 1:00 PM  
Website: <https://cmhpl.psychiatry.uw.edu/education/events/civil-commitment/>  
Contact: [cmhpl@uw.edu](mailto:cmhpl@uw.edu)

# University of Washington

## Regularly Scheduled Continuing Medical Education Programs

### **Integrated Care Psychiatric Consultant Learning Collaborative**

Virtual | Zoom  
Monthly, 2<sup>nd</sup> Tuesday | 12:00 PM - 1:00 PM  
Website: <https://ictp.uw.edu/programs/integrated-care-psycho-social-consultant-learning-collaborative>

### **MAP ECHO: Perinatal Psychiatry Case Conference Series**

Virtual | Zoom  
Monthly, 1<sup>st</sup> Wednesday | 12:00 PM - 1:00 PM  
Website: <https://perc.psychiatry.uw.edu/map-echo-perinatal-psycho-social-case-conference-series/>  
Contact: Joanne Quiray [mcmh@uw.edu](mailto:mcmh@uw.edu)

### **TeleBehavioral Health Training 101, 201, 301, 401**

Harborview Medical Center Behavioral Health Institute  
Online | LMS Modules  
On Demand | Self-Paced  
[TeleBehavioral Health - Harborview Behavioral Health Institute \(uw.edu\)](#);  
Contact: [bhinstitute@uw.edu](mailto:bhinstitute@uw.edu)

### **TeleBehavioral Health Training 501**

Harborview Medical Center Behavioral Health Institute  
Virtual | Zoom  
Monthly, 3<sup>rd</sup> Friday | 11:00 AM - 12:00 PM  
[TeleBehavioral Health - Harborview Behavioral Health Institute \(uw.edu\)](#);  
Contact: [bhinstitute@uw.edu](mailto:bhinstitute@uw.edu)

### **UW Psychiatry and Addictions Case Conference**

Virtual | Zoom  
Weekly, Thursday | 12:00 PM - 1:30 PM  
[UW PACC | Integrated Care Training Program](#)  
Contact [uwpacc@uw.edu](mailto:uwpacc@uw.edu)

### **UW Traumatic Brain Injury - Behavioral Health ECHO**

Webinar | Zoom  
Bimonthly, 1<sup>st</sup> and 3<sup>rd</sup> Friday | 12:00 PM - 1:30 PM  
[TBI BH ECHO – Connecting Frontline Providers with Experts \(uw.edu\)](#)  
Contact: [tbi-bh@uw.edu](mailto:tbi-bh@uw.edu)

### **Nuclear Medicine Clinical Case Conference**

Virtual | Zoom  
Weekly, Thursday | 7:30 AM - 9:00 AM  
Contact: Paula Last [lastp@uw.edu](mailto:lastp@uw.edu)

### **Radiology Peer Learning Conference**

Hybrid | Harborview Medical Center and Zoom  
Monthly, 4<sup>th</sup> Thursday | 12:00 PM - 1:00 PM

## **DEPARTMENT OF RADIOLOGY**

### **Nuclear Medicine Clinical Case Conference**

Hybrid | Zoom & TBD  
Weekly, Thursday | 7:30 AM - 9:00 AM  
Contact: [lastp@uw.edu](mailto:lastp@uw.edu)

## **DEPARTMENT OF SURGERY**

### **Surgery Grand Rounds**

Hybrid | UWMC Montlake Campus K069 & Zoom  
Monthly, 1<sup>st</sup> Wednesday | 6:30 AM - 7:30 AM  
Contact: [dosadmin@uw.edu](mailto:dosadmin@uw.edu)

## **FRED HUTCH CANCER CENTER**

### **Head & Neck Cancer Webinar Series**

Virtual | Zoom  
September, November, February, April  
Contact [outreach@fredhutch.org](mailto:outreach@fredhutch.org)

### **Immune-Related Adverse Events (irAE) Webinar**

Virtual | Zoom  
September, December, March, June  
Contact [outreach@fredhutch.org](mailto:outreach@fredhutch.org)

## **OFFICE OF FACULTY AFFAIRS**

### **CLIME Advanced Clinical Teaching Program**

Center for Leadership and Innovation in Medical Education  
Virtual | Zoom  
Monthly | 1:00 PM - 3:00 PM  
Website: <https://clime.washington.edu/>  
Contact: [clime@uw.edu](mailto:clime@uw.edu)

### **CLIME Clinical Teaching Program**

Center for Leadership and Innovation in Medical Education  
Virtual | Zoom  
Monthly | 9:00 AM - 11:00 AM  
Website: <https://clime.washington.edu/>  
Contact: [clime@uw.edu](mailto:clime@uw.edu)

### **CLIME Educator Development Series**

Center for Leadership and Innovation in Medical Education  
Hybrid | UW Magnuson Health Sciences Building & Zoom  
Monthly, 1<sup>st</sup> Thursday | 12:00 PM - 1:00 PM  
Website: <https://clime.washington.edu/>  
Contact: [clime@uw.edu](mailto:clime@uw.edu)

### **Electronic Health Record (EHR) Inbox Management**

Office of Faculty Affairs  
In-person | Varied Locations  
Varied | 9:00 AM - 11:30 AM  
October 24, 2024: <https://faculty.uwmedicine.org/events-calendar/ehr-inbox-management-2/>  
March 25, 2025: <https://faculty.uwmedicine.org/events-calendar/ehr-inbox-management-3/>

### **Healthcare Finance Series**

Office of Faculty Affairs  
Virtual 2 sessions, In-person, 1 session | Zoom & TBA  
Varied | 9:00 AM - 11:00 AM  
More information: <https://faculty.uwmedicine.org/healthcare-finance/>

### **Leadership Development Series**

Office of Faculty Affairs  
Virtual | Zoom  
Varied | 9:00 AM - 11:00 AM  
More information: <https://faculty.uwmedicine.org/leadership/>

### **Mindful Self-Compassion Series**

Office of Faculty Affairs  
Virtual | Zoom  
Weekly, Thursday | 12:00 PM - 1:00 PM  
September 5, 2024 - October 10, 2024  
More information: <https://faculty.uwmedicine.org/resilience-programming/>

# University of Washington

## Regularly Scheduled Continuing Medical Education Programs

### **Rising Leaders**

Office of Faculty Affairs

In-person | UWMC Montlake Campus

Varied | 12:00 PM - 5:00 PM

Website: <https://faculty.uwmedicine.org/rising-leaders/>

### **Women in Medicine**

Office of Faculty Affairs

Hybrid | TBA & Zoom

Website: <https://faculty.uwmedicine.org/women-in-medicine-and-science/>

### **OFFICE OF HEALTHCARE EQUITY**

#### **Office of Healthcare Equity EDI Foundational Training**

Virtual | Zoom

Varied - 5 Sessions | 10:00 AM - 12:00 PM Website:

<https://equity.uwmedicine.org/employee-resources/foundational-training/>